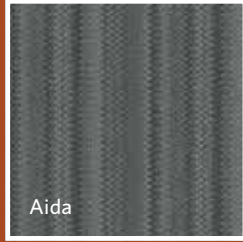
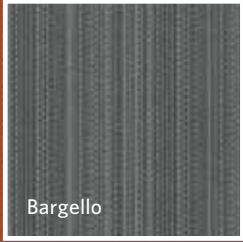
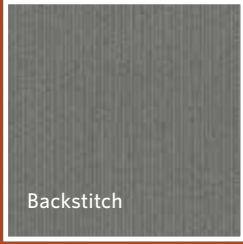
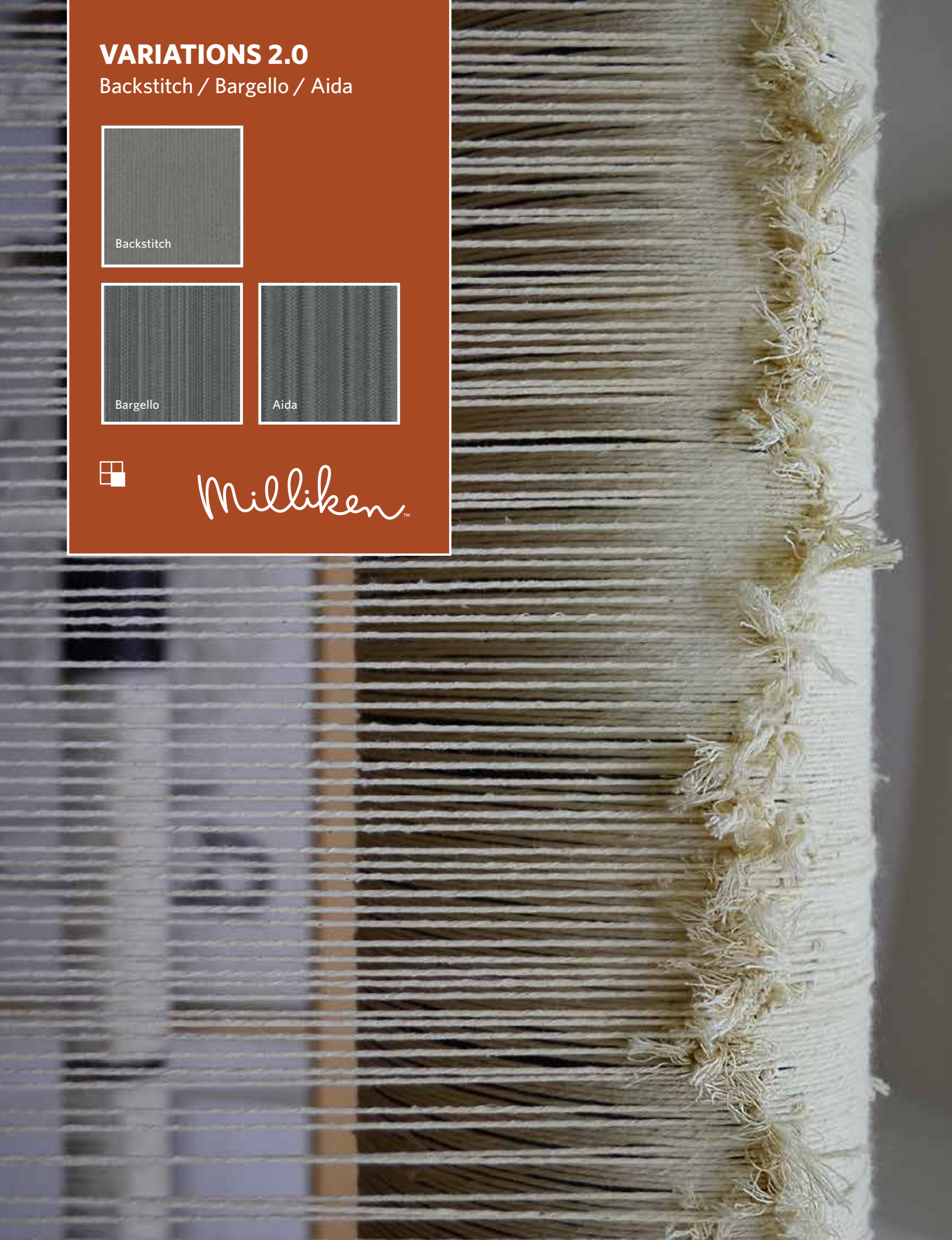


VARIATIONS 2.0

Backstitch / Bargello / Aida



Milliken™





Aida in Needlework and Shibori, ashlar installation



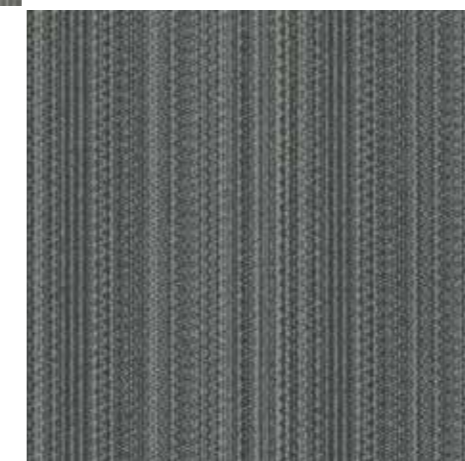
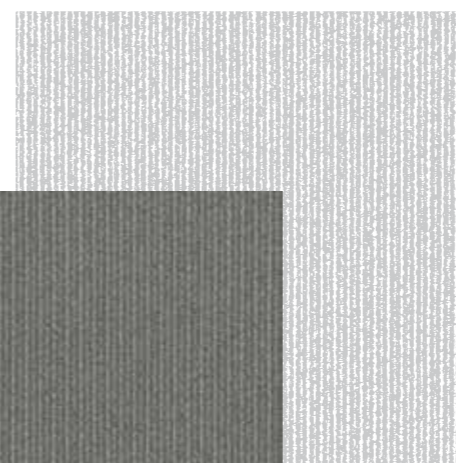
INSPIRED. INSPIRING.

源于灵感 智启灵感

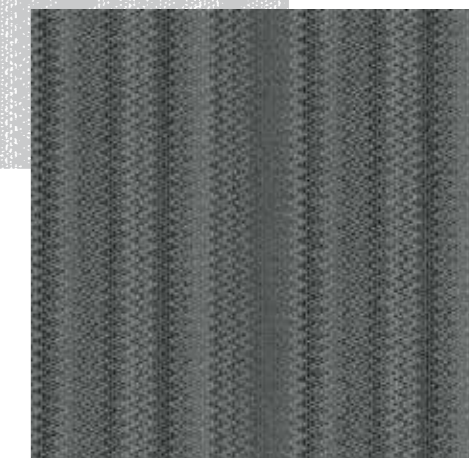
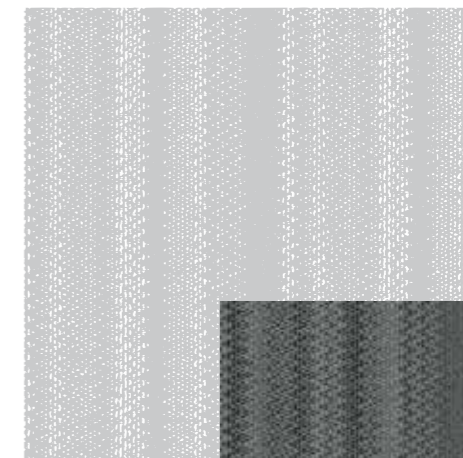
Variations collection explores the depths of yarn manipulation in creating a continuous textural surface. Different types of threadups and shift motions are used to achieve varying colours, textures, density and integrity of patterns. All 3 patterns can be used together within the same space to create multiple dimensions of colour and surface.



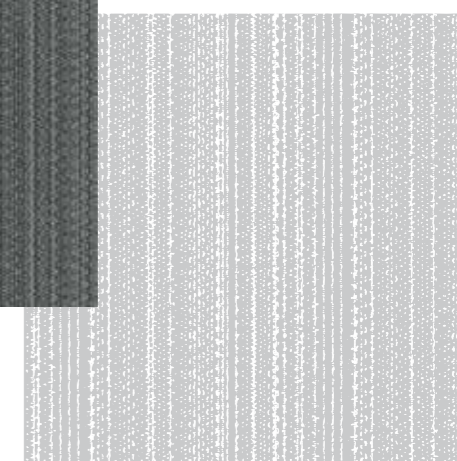
Backstitch



Bargello



Aida

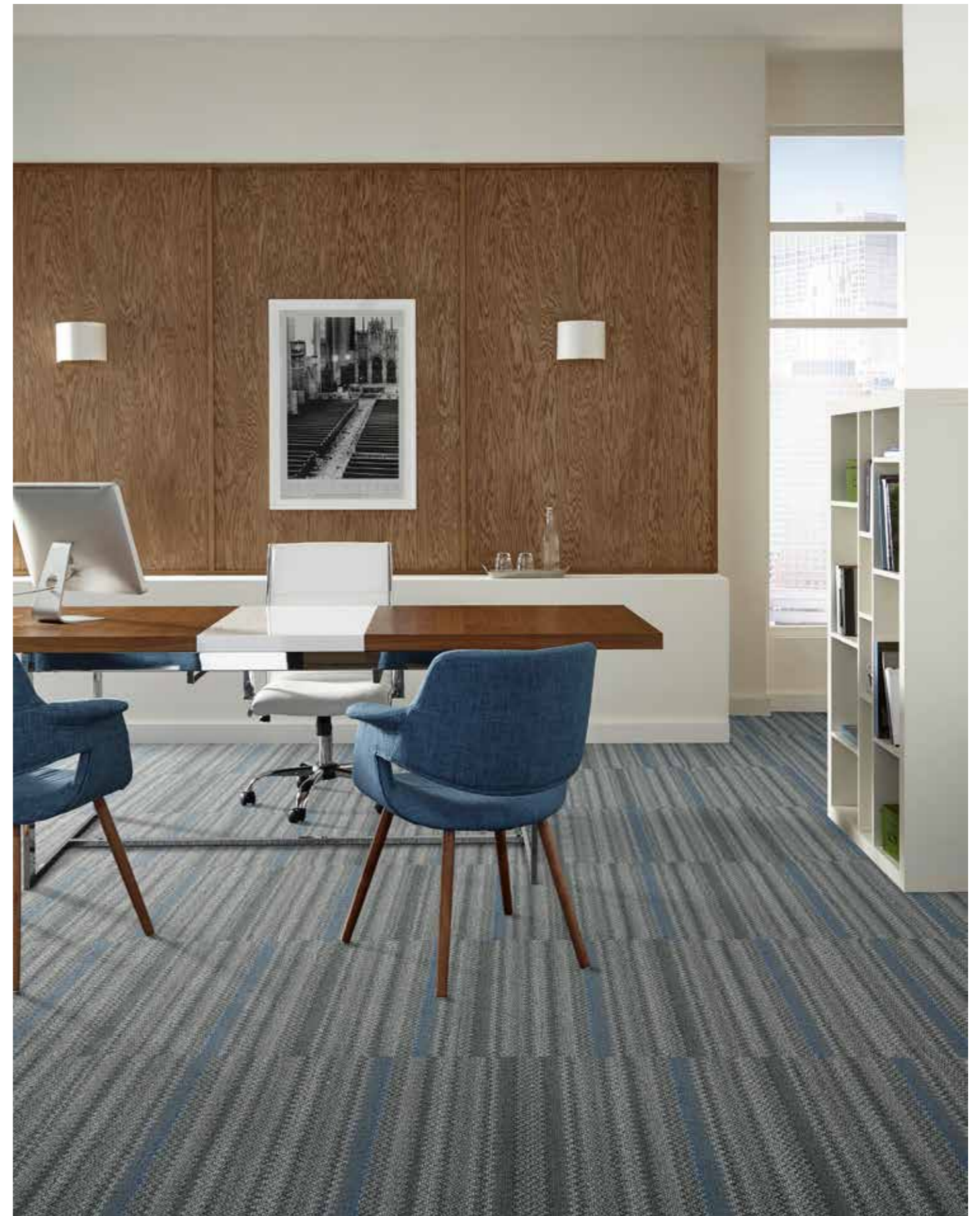




Bargello and Aida in Loop, Backstitch in Blackwork, ashlar installation



Backstitch in Quilt, ashlar installation



Aida in Needlework, ashlar installation



Bargello in Loop, ashlar installation



Backstitch and Aida in Motif, ashlar installation



Aida in Loop, Motif and Needlework, ashlar installation



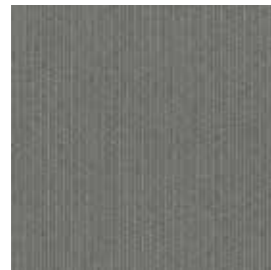
Backstitch and Bargello in Ikat, ashlar installation



Aida in Blackwork, ashlar installation

COLORLINE

Backstitch



BS217-6 LOOP



BS209-13 QUILT



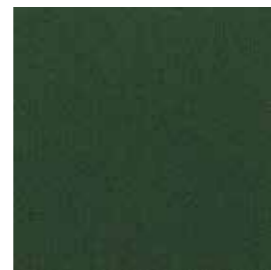
BS180-123 SHIBORI



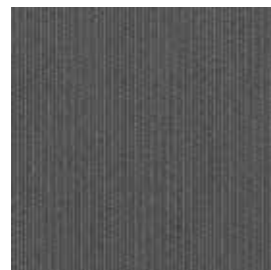
BS174-234 MOTIF



BS153-107 TAPESTRY



BS120-230 IKAT



BS209-174 NEEDLEWORK

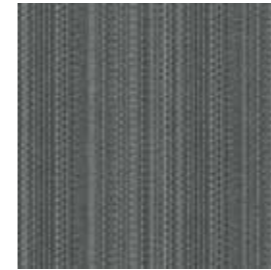


BS234-119 BLACKWORK



BS154-169 BATIK

Bargello



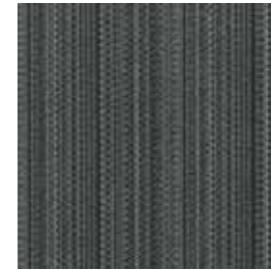
BA133-217-6 LOOP



BA154-6-13 QUILT



BA180-123-13 SHIBORI



BA124-133-234 MOTIF



BA107-153-118 TAPESTRY



BA213-230-120 IKAT



BA196-209-13 NEEDLEWORK

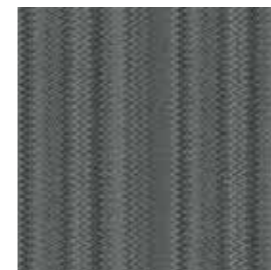


BA114-234-119 BLACKWORK



BA207-169-154 BATIK

Aida



AI133-217-6 LOOP



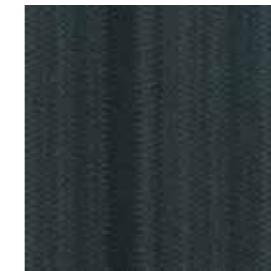
AI154-6-13 QUILT



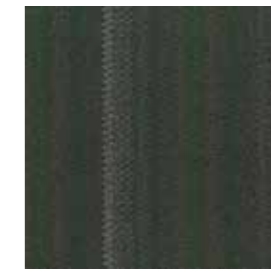
AI180-123-13 SHIBORI



AI124-133-234 MOTIF



AI107-153-118 TAPESTRY



AI213-230-120 IKAT



AI196-209-13 NEEDLEWORK



AI114-234-119 BLACKWORK



AI207-169-154 BATIK

VARIATIONS 2.0

Backstitch / Bargello / Aida

SPECIFICATION

Construction - Tufted, Textured Loop

Tile Size - 50cm X 50cm (19.7" X 19.7")

Face Fiber - 100% Milliken Certified Nylon

Dye Method - Solution Dyed

Standard Backing - WellBAC™ Function

Nominal Total Thickness - 5.6 mm AVG.

技术指标

结构 - 簇绒织造圈绒结构

产品尺寸 - 50 厘米 X 50 厘米 (19.7 X 19.7 英寸)

表层纤维 - 100% 美利肯认证尼龙

染色技术 - 原液染色

标准底垫 - WellBAC™ Function

额定总厚度 - 5.6 毫米 平均

PERFORMANCE

Antimicrobial - AlphaSan® AF Built-In Protection

Flammability - ≥ 0.45 (Class I)

Texture Appearance Retention Rating (TARR) - Heavy

Indoor Air Quality - CRI Green Label Plus™ - GLP3200, CARPET CATEGORY 14X

产品性能

抗菌工艺 - AlphaSan® 内置保护

阻燃性 - ≥ 0.45 (一级)

外观保持等级 (TARR) - 频繁商业使用

室内空气质量 CRI Green Label Plus™ - GLP3200, 地毯类别 14X



Declare.

Milliken

Installation Method 安装方式:



Ashlar
品字安装



Quarter-turn
转直角安装

China

Beijing / Tianjin / Wuhan / Shenzhen

T +86 10 6465 1206

Shanghai / Suzhou / Nanjing

Hangzhou / Hefei

T +86 21 6145 1758

Chengdu / Chongqing

T +86 181 1727 5593

Guangzhou

T +86 20 3846 8085

Hong Kong

T +852 3956 2259

India

Bangalore

T +91 98459 14059

Chennai

T +91 98408 98963

Delhi

T +91 98104 77922

Mumbai

T +91 98926 00362

Rest of Asia

Manila

T +63 915 816 7127

Seoul

T +82 2 3783 0747

Singapore

T +65 6593 1301

Tokyo

T +81 3 5203 8406

Jakarta

T +6221 5289 7330



www.millikencarpet.com

2710028853
Issued Oct 2018